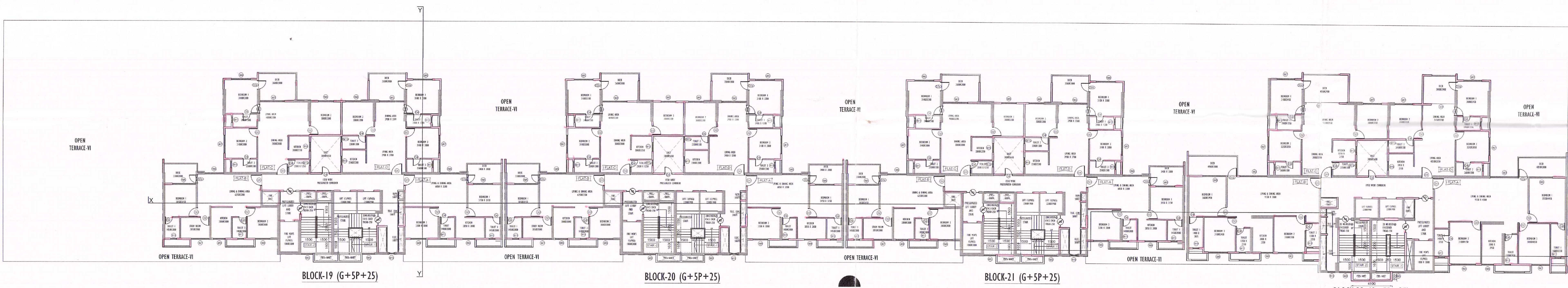
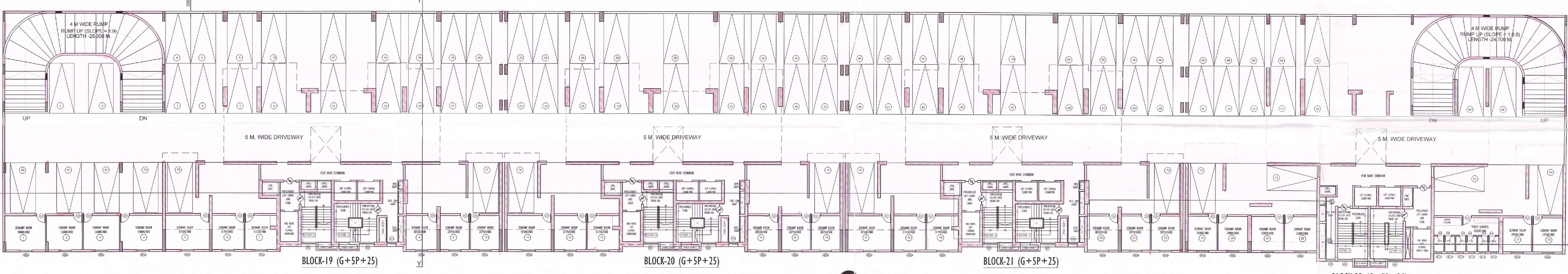


Sl. No.	Description	Area (sq. m)	Remarks
1	COVERED AREA (COMBINED 4 TOWERS)	1305.97	SQM
2	OPEN TERRACE AREA (COMBINED 4 TOWERS)	1305.97	SQM
3	COVERED AREA (COMBINED 4 TOWERS)	1305.97	SQM
4	OPEN TERRACE AREA (COMBINED 4 TOWERS)	1305.97	SQM
5	COVERED AREA (COMBINED 4 TOWERS)	1305.97	SQM
6	OPEN TERRACE AREA (COMBINED 4 TOWERS)	1305.97	SQM
7	COVERED AREA (COMBINED 4 TOWERS)	1305.97	SQM
8	OPEN TERRACE AREA (COMBINED 4 TOWERS)	1305.97	SQM
9	COVERED AREA (COMBINED 4 TOWERS)	1305.97	SQM
10	OPEN TERRACE AREA (COMBINED 4 TOWERS)	1305.97	SQM
11	COVERED AREA (COMBINED 4 TOWERS)	1305.97	SQM
12	OPEN TERRACE AREA (COMBINED 4 TOWERS)	1305.97	SQM
13	COVERED AREA (COMBINED 4 TOWERS)	1305.97	SQM
14	OPEN TERRACE AREA (COMBINED 4 TOWERS)	1305.97	SQM
15	COVERED AREA (COMBINED 4 TOWERS)	1305.97	SQM
16	OPEN TERRACE AREA (COMBINED 4 TOWERS)	1305.97	SQM
17	COVERED AREA (COMBINED 4 TOWERS)	1305.97	SQM
18	OPEN TERRACE AREA (COMBINED 4 TOWERS)	1305.97	SQM
19	COVERED AREA (COMBINED 4 TOWERS)	1305.97	SQM
20	OPEN TERRACE AREA (COMBINED 4 TOWERS)	1305.97	SQM
21	COVERED AREA (COMBINED 4 TOWERS)	1305.97	SQM
22	OPEN TERRACE AREA (COMBINED 4 TOWERS)	1305.97	SQM
23	COVERED AREA (COMBINED 4 TOWERS)	1305.97	SQM
24	OPEN TERRACE AREA (COMBINED 4 TOWERS)	1305.97	SQM
25	COVERED AREA (COMBINED 4 TOWERS)	1305.97	SQM
26	OPEN TERRACE AREA (COMBINED 4 TOWERS)	1305.97	SQM
27	COVERED AREA (COMBINED 4 TOWERS)	1305.97	SQM
28	OPEN TERRACE AREA (COMBINED 4 TOWERS)	1305.97	SQM
29	COVERED AREA (COMBINED 4 TOWERS)	1305.97	SQM
30	OPEN TERRACE AREA (COMBINED 4 TOWERS)	1305.97	SQM
31	COVERED AREA (COMBINED 4 TOWERS)	1305.97	SQM
32	OPEN TERRACE AREA (COMBINED 4 TOWERS)	1305.97	SQM
33	COVERED AREA (COMBINED 4 TOWERS)	1305.97	SQM
34	OPEN TERRACE AREA (COMBINED 4 TOWERS)	1305.97	SQM
35	COVERED AREA (COMBINED 4 TOWERS)	1305.97	SQM
36	OPEN TERRACE AREA (COMBINED 4 TOWERS)	1305.97	SQM
37	COVERED AREA (COMBINED 4 TOWERS)	1305.97	SQM
38	OPEN TERRACE AREA (COMBINED 4 TOWERS)	1305.97	SQM
39	COVERED AREA (COMBINED 4 TOWERS)	1305.97	SQM
40	OPEN TERRACE AREA (COMBINED 4 TOWERS)	1305.97	SQM
41	COVERED AREA (COMBINED 4 TOWERS)	1305.97	SQM
42	OPEN TERRACE AREA (COMBINED 4 TOWERS)	1305.97	SQM
43	COVERED AREA (COMBINED 4 TOWERS)	1305.97	SQM
44	OPEN TERRACE AREA (COMBINED 4 TOWERS)	1305.97	SQM
45	COVERED AREA (COMBINED 4 TOWERS)	1305.97	SQM
46	OPEN TERRACE AREA (COMBINED 4 TOWERS)	1305.97	SQM
47	COVERED AREA (COMBINED 4 TOWERS)	1305.97	SQM
48	OPEN TERRACE AREA (COMBINED 4 TOWERS)	1305.97	SQM
49	COVERED AREA (COMBINED 4 TOWERS)	1305.97	SQM
50	OPEN TERRACE AREA (COMBINED 4 TOWERS)	1305.97	SQM
51	COVERED AREA (COMBINED 4 TOWERS)	1305.97	SQM
52	OPEN TERRACE AREA (COMBINED 4 TOWERS)	1305.97	SQM
53	COVERED AREA (COMBINED 4 TOWERS)	1305.97	SQM
54	OPEN TERRACE AREA (COMBINED 4 TOWERS)	1305.97	SQM
55	COVERED AREA (COMBINED 4 TOWERS)	1305.97	SQM
56	OPEN TERRACE AREA (COMBINED 4 TOWERS)	1305.97	SQM
57	COVERED AREA (COMBINED 4 TOWERS)	1305.97	SQM
58	OPEN TERRACE AREA (COMBINED 4 TOWERS)	1305.97	SQM
59	COVERED AREA (COMBINED 4 TOWERS)	1305.97	SQM
60	OPEN TERRACE AREA (COMBINED 4 TOWERS)	1305.97	SQM
61	COVERED AREA (COMBINED 4 TOWERS)	1305.97	SQM
62	OPEN TERRACE AREA (COMBINED 4 TOWERS)	1305.97	SQM
63	COVERED AREA (COMBINED 4 TOWERS)	1305.97	SQM
64	OPEN TERRACE AREA (COMBINED 4 TOWERS)	1305.97	SQM
65	COVERED AREA (COMBINED 4 TOWERS)	1305.97	SQM
66	OPEN TERRACE AREA (COMBINED 4 TOWERS)	1305.97	SQM
67	COVERED AREA (COMBINED 4 TOWERS)	1305.97	SQM
68	OPEN TERRACE AREA (COMBINED 4 TOWERS)	1305.97	SQM
69	COVERED AREA (COMBINED 4 TOWERS)	1305.97	SQM
70	OPEN TERRACE AREA (COMBINED 4 TOWERS)	1305.97	SQM
71	COVERED AREA (COMBINED 4 TOWERS)	1305.97	SQM
72	OPEN TERRACE AREA (COMBINED 4 TOWERS)	1305.97	SQM
73	COVERED AREA (COMBINED 4 TOWERS)	1305.97	SQM
74	OPEN TERRACE AREA (COMBINED 4 TOWERS)	1305.97	SQM
75	COVERED AREA (COMBINED 4 TOWERS)	1305.97	SQM
76	OPEN TERRACE AREA (COMBINED 4 TOWERS)	1305.97	SQM
77	COVERED AREA (COMBINED 4 TOWERS)	1305.97	SQM
78	OPEN TERRACE AREA (COMBINED 4 TOWERS)	1305.97	SQM
79	COVERED AREA (COMBINED 4 TOWERS)	1305.97	SQM
80	OPEN TERRACE AREA (COMBINED 4 TOWERS)	1305.97	SQM
81	COVERED AREA (COMBINED 4 TOWERS)	1305.97	SQM
82	OPEN TERRACE AREA (COMBINED 4 TOWERS)	1305.97	SQM
83	COVERED AREA (COMBINED 4 TOWERS)	1305.97	SQM
84	OPEN TERRACE AREA (COMBINED 4 TOWERS)	1305.97	SQM
85	COVERED AREA (COMBINED 4 TOWERS)	1305.97	SQM
86	OPEN TERRACE AREA (COMBINED 4 TOWERS)	1305.97	SQM
87	COVERED AREA (COMBINED 4 TOWERS)	1305.97	SQM
88	OPEN TERRACE AREA (COMBINED 4 TOWERS)	1305.97	SQM
89	COVERED AREA (COMBINED 4 TOWERS)	1305.97	SQM
90	OPEN TERRACE AREA (COMBINED 4 TOWERS)	1305.97	SQM
91	COVERED AREA (COMBINED 4 TOWERS)	1305.97	SQM
92	OPEN TERRACE AREA (COMBINED 4 TOWERS)	1305.97	SQM
93	COVERED AREA (COMBINED 4 TOWERS)	1305.97	SQM
94	OPEN TERRACE AREA (COMBINED 4 TOWERS)	1305.97	SQM
95	COVERED AREA (COMBINED 4 TOWERS)	1305.97	SQM
96	OPEN TERRACE AREA (COMBINED 4 TOWERS)	1305.97	SQM
97	COVERED AREA (COMBINED 4 TOWERS)	1305.97	SQM
98	OPEN TERRACE AREA (COMBINED 4 TOWERS)	1305.97	SQM
99	COVERED AREA (COMBINED 4 TOWERS)	1305.97	SQM
100	OPEN TERRACE AREA (COMBINED 4 TOWERS)	1305.97	SQM

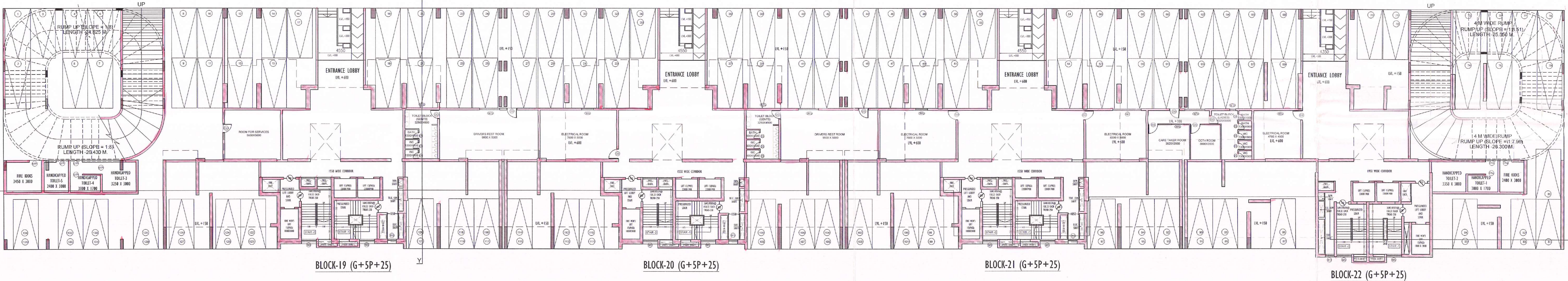


**6TH FLOOR PLAN ( BLOCK- 19, 20,21 & 22 )**  
FRONT SIDE (ROAD SIDE)



**1ST, 2ND, 3RD, 4TH & 5TH FLOOR PLAN ( BLOCK- 19, 20,21 & 22 )**  
FRONT SIDE (FOAD SIDE)

NO OF PARKING (INDEPENDENT)- 19 X 5 = 90 NO.  
NO OF PARKING (DEPENDENT)- 32 X 2 X 5 = 320 NO.  
NO OF SERVENT ROOM- 28 X 5 = 140 NO.



**GROUND FLOOR PLAN ( BLOCK- 19, 20,21 & 22 )**  
FRONT SIDE (ROAD SIDE)

NO OF PARKING (INDEPENDENT)- 3 NO.  
NO OF PARKING (DEPENDENT)- 70 NO.  
NO OF PARKING (MECHANICAL)- 31 X 2 = 62 NO.

- ALL DIMENSIONS ARE IN MILLIMETRES.
- THIS DRAWING SHOULD BE READ IN CONJUNCTION WITH ALL OTHER RELEVANT ARCHITECTURAL DRAWINGS.
- ONLY WRITTEN DIMENSIONS SHALL BE FOLLOWED.
- FOR DETAIL DESCRIPTION OF ITEMS REFER TECHNICAL SPECIFICATION.
- ALL VED. LEVELS DIMENSIONS DENOTES STRUCTURAL LEVELS/DIMENSIONS WITHOUT FINISH.
- FOR DIMENSIONS OF BEAM COL & OTHERS STRUCTURAL MEMBERS SHOULD BE FOLLOWED THE STRUCTURAL DWG.

DOOR AND WINDOW OPENING SCHEDULE		
<b>DOOR AND WINDOW SCHEDULE</b>		
<b>DOOR</b>		
DT 1500 X 2100	2100	---
DT 1100 X 2100	2100	---
DT 900 X 2100	2100	---
DT 800 X 2100	2100	---
DT 750 X 2100	2100	---
DT 600 X 2100	2100	---
DT 3500 X 2400	2400	---
DT 1200 X 2200	2200	---
<b>WINDOW</b>		
WT 1500 X 1300	1300	900
WT 1250 X 1300	1300	900
WT 1100 X 1300	1300	900
WT 900 X 1300	1300	900
WT 850 X 1300	1300	900
WT 750 X 1300	1300	900
WT 650 X 1300	1300	900
WT 550 X 1300	1300	900
WT 450 X 1300	1300	900
WT 350 X 1300	1300	900
WT 250 X 1300	1300	900
WT 150 X 1300	1300	900
WT 100 X 1300	1300	900
WT 50 X 1300	1300	900
WT 100 X 1500	1500	900
WT 100 X 1200	1200	900
WT 100 X 1000	1000	900
WT 100 X 800	800	900
WT 100 X 600	600	900
WT 100 X 400	400	900
WT 100 X 200	200	900

WE HEREBY CERTIFY THAT THE FOUNDATION AND SUPERSTRUCTURE OF THE BUILDING PROPOSED FOR CONSTRUCTION ON PLOT, HOLDING NO 25-177(M), GANGA BANSA ROAD, UNDER MAHESHTALA MUNICIPALITY, WARD NO-20, P.S. MAHESHTALA, KOLKATA - 700 140, SOUTH 24 PARAGANA, HAVE BEEN DESIGNED BY ME/SUBIR KUMAR BASU, REGISTERED ARCHITECT AND SUPERSTRUCTURE SAFE IN ALL RESPECT INCLUDING THE CONSIDERATION OF BEARING CAPACITY AND SETTLEMENT OF SOIL ETC.

**ALOK ROY**  
Sangrevel Geological Engineer  
Kolkata Municipal Corporation  
G.A. Milan Park  
R.N. Chatterjee Road  
SANGREVEL GEO-TECHNICAL ENGINEER

WE HEREBY CERTIFY THAT THE FOUNDATION AND SUPERSTRUCTURE OF THE BUILDING PROPOSED FOR CONSTRUCTION ON PLOT, HOLDING NO 25-177(M), GANGA BANSA ROAD, UNDER MAHESHTALA MUNICIPALITY, WARD NO-20, P.S. MAHESHTALA, KOLKATA - 700 140, SOUTH 24 PARAGANA, HAVE BEEN DESIGNED BY ME/SUBIR KUMAR BASU, REGISTERED ARCHITECT AND SUPERSTRUCTURE SAFE IN ALL RESPECT INCLUDING THE CONSIDERATION OF BEARING CAPACITY AND SETTLEMENT OF SOIL ETC.

**SANJEEV PARIKH**  
M.E. IN STRUCTURAL ENGINEERING  
R.A.C. E. P. H. 14724-4  
E.N. SANGHVI & CO. PVT. LTD.  
REVIEWER

**SIGN. OF STRUCTURAL REVIEWER**  
WE HEREBY CERTIFY THAT THE FOUNDATION AND SUPERSTRUCTURE OF THE BUILDING PROPOSED FOR CONSTRUCTION ON PLOT, HOLDING NO 25-177(M), GANGA BANSA ROAD, UNDER MAHESHTALA MUNICIPALITY, WARD NO-20, P.S. MAHESHTALA, KOLKATA - 700 140, SOUTH 24 PARAGANA, HAVE BEEN DESIGNED BY ME/SUBIR KUMAR BASU, REGISTERED ARCHITECT AND SUPERSTRUCTURE SAFE IN ALL RESPECT INCLUDING THE CONSIDERATION OF BEARING CAPACITY AND SETTLEMENT OF SOIL ETC.

**ANKIT AGARWAL**  
G.E. IN CIVIL & E.C.E.  
G. ENGINEERING COLLEGE  
MANAGING DIRECTOR  
CLASS-1, E.S. 1 / 172

**SIGN. OF OWNER**  
**M/S SWAN ENGINEERING COMPANY**  
Director / Authorized Signatory

**SIGN. OF ARCHITECT**  
WE HEREBY CERTIFY THAT THE FOUNDATION AND SUPERSTRUCTURE OF THE BUILDING PROPOSED FOR CONSTRUCTION ON PLOT, HOLDING NO 25-177(M), GANGA BANSA ROAD, UNDER MAHESHTALA MUNICIPALITY, WARD NO-20, P.S. MAHESHTALA, KOLKATA - 700 140, SOUTH 24 PARAGANA, HAVE BEEN DESIGNED BY ME/SUBIR KUMAR BASU, REGISTERED ARCHITECT AND SUPERSTRUCTURE SAFE IN ALL RESPECT INCLUDING THE CONSIDERATION OF BEARING CAPACITY AND SETTLEMENT OF SOIL ETC.

**PROJECT :-**  
PROPOSED RESIDENTIAL COMPLEX OF M/S SWAN ENGINEERING COMPANY, CONSISTING 22 NO (G+2) (HEIGHT - 9.6 METER) ROW HOUSES, 9 NO (G+5) (HEIGHT - 20 METER) TOWN HOUSES IN PHASE-I AND 3 NO (G+2) (HEIGHT - 9.6 METER) ROW HOUSES, 5 NO (G+5) (HEIGHT - 20 METER) TOWN HOUSES, 4 NO (G+5P+25) (HEIGHT - 97.55 METER) TOWER BUILDINGS IN PHASE - II FOR ROYAL GANGES-2 AT HOLDING NO - 25-177(M) GANGA BANSA ROAD, MOUZA- KRISHNANAGAR, ILMO-1, L.R. KHATAN NO-3930, L.R. DAG NOS- 382, 383, 419, 429 UNDER MAHESHTALA MUNICIPALITY, WARD NO-20, P.S.-MAHESHTALA, P.O.-BATANAGAR,SOUTH 24 PARAGANA, KOLKATA-700140

**DWG. TITLE - BLOCK - 19 TO 22 (G+5P+25)**  
**SHEET TITLE - FLOOR PLAN**  
**ARCHITECT**  
**Subir Kumar Basu**  
CONSULTING ARCHITECTS & ENGINEERS  
4, BROAD STREET  
KOLKATA-700019  
Website: www.subirkumarbasu.com

DATE	SCALE	SHEET	DRAWING NO.	DATE	SHEET NO.
18/07/2023	1:100	48	MS/ENR/2023	18/07/2023	2



APARTMENT BUILDING

ORIGINAL COPY / DUPLICATE COPY  
FINAL / PROVISIONALLY SANCTIONED  
SITE PLAN

Plan No. BB/MP/MLDC/332 / 21-22 / SP/MP

Date: 14.08.21

Name: M/S SHAN ENGG. COMPANY

Address: Krishnarayan

Ward No: 20

Valid Date: 16 AUG 2023

Sub-Asst. Engineer, Building Section, Maheshwari Municipality, Upto 15.08.26

16 AUG 2023  
Sub-Asst. Engineer, Building Section, Maheshwari Municipality, Upto 15.08.26

16 AUG 2023

Sub-Asst. Engineer, Building Section, Maheshwari Municipality, Upto 15.08.26

16 AUG 2023

Sub-Asst. Engineer, Building Section, Maheshwari Municipality, Upto 15.08.26

16 AUG 2023

Sub-Asst. Engineer, Building Section, Maheshwari Municipality, Upto 15.08.26

16 AUG 2023

Sub-Asst. Engineer, Building Section, Maheshwari Municipality, Upto 15.08.26

16 AUG 2023

Sub-Asst. Engineer, Building Section, Maheshwari Municipality, Upto 15.08.26

16 AUG 2023

Sub-Asst. Engineer, Building Section, Maheshwari Municipality, Upto 15.08.26

16 AUG 2023

Sub-Asst. Engineer, Building Section, Maheshwari Municipality, Upto 15.08.26

16 AUG 2023

Sub-Asst. Engineer, Building Section, Maheshwari Municipality, Upto 15.08.26

16 AUG 2023

Sub-Asst. Engineer, Building Section, Maheshwari Municipality, Upto 15.08.26

16 AUG 2023

Sub-Asst. Engineer, Building Section, Maheshwari Municipality, Upto 15.08.26

16 AUG 2023

Sub-Asst. Engineer, Building Section, Maheshwari Municipality, Upto 15.08.26

16 AUG 2023

Sub-Asst. Engineer, Building Section, Maheshwari Municipality, Upto 15.08.26

16 AUG 2023

Sub-Asst. Engineer, Building Section, Maheshwari Municipality, Upto 15.08.26

16 AUG 2023

Sub-Asst. Engineer, Building Section, Maheshwari Municipality, Upto 15.08.26

16 AUG 2023

Sub-Asst. Engineer, Building Section, Maheshwari Municipality, Upto 15.08.26

16 AUG 2023

Sub-Asst. Engineer, Building Section, Maheshwari Municipality, Upto 15.08.26

16 AUG 2023

Sub-Asst. Engineer, Building Section, Maheshwari Municipality, Upto 15.08.26

16 AUG 2023

Sub-Asst. Engineer, Building Section, Maheshwari Municipality, Upto 15.08.26

16 AUG 2023

Sub-Asst. Engineer, Building Section, Maheshwari Municipality, Upto 15.08.26

16 AUG 2023